

1600 -1601 -1602 -16010

QUICK DRY COUPLER

MALE



CE  II 2 G

It's a Safety accessory in according with Directives ATEX 2014/34/EU and PED 2014/68/UE. The dry quick coupling is used to prevent any possible leaking during the process of transferring hazardous fluids in different fields of application (petrochemical, food, pharmaceutical, beverage & more).

- Valve opens and closes automatically
- No residual loss on disconnection
- Connected & disconnected in pressure
- Available 2", 2"1/2 and 3"

The best performances allowed by the new regulation:

- Max operational temperature 60°C
- Max operational pressure 8 bar



DRY BREAK
MALE



DRY BREAK
FEMALE/MALE CONNECTED

Chemical Suitability

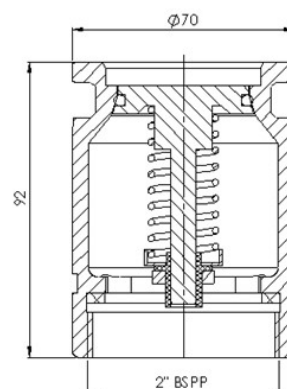
- Standard model is for traditional fuel without additives.
- "SS" model is for aggressive solvents, acids or bases.

Specification

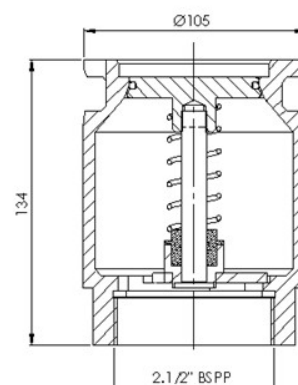
PRODUCT	1600/1601/1602 OT	1600/1601/1602 AL	1600/1601/1602 SS
BODY	BRASS	ALUMINIUM	STAINLESS STEEL
O-RING	VITON®	VITON®	VITON® (Or: SFEP)
GASKET	ELASTOPLAL	ELASTOPAL	PTFE
PRODOTTO	1600 2"	1601 2"1/2	1602 3"
CODICE	1600-50 OT 1600-50 AL 1600-50 SS	1601-65 OT 1601-65 AL 1601-65 SS	1602-80 OT 1602-80 AL 1602-80 SS
DESCRIPTION	MALE	MALE	MALE
COUPLER	2"1/2 M NATO STANAG 3756 Ø 70 mm	2"1/2 M NATO STANAG 3756 Ø 105 mm	3" M NATO STANAG 3756 Ø 119 mm
THREAD	2" F BSPP	2"1/2 F BSPP	3" F BSPP
HEIGHT mm	92	134	134
FLOW l/min Gravity	420	820	850
FLOW l/min (8 bar)	800	940	970



1600
Ø 70 mm
2" F BSPP

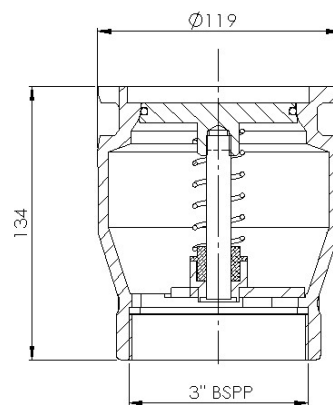


1601
Ø 105 mm
2" 1/2 F BSPP





1601
 Ø 119 mm
 3" F BSPP



PRODUCT	1610	1610N	1610
CODE	1610-50	1610N-50	1610-80
DESCRIPTION	BLACK CUP	RED CUP	BLACK CUP
MATERIAL	BLACK RUBBER	RED RUBBER	BLACK RUBBER
DIMENSION	Ø 70 mm	Ø 70 mm	Ø 119 mm
HEIGHT mm	16.5	16.5	18





Installation

- Protection System is unidirectional, for vertical or orizzontal installation.
- For correct installation follow the Directives and product User Manual.
- Contact our technical department for custom application or maintenance by email to:
quality@ridart.it.
- Product Certification, Declaration of Conformity and User Manuals are available on:
www.ridart.it/support.

Maintenance

- Periodically check the device is necessary to remove possible dirty.
- In case of tampering warranty expires and safety protection is not guaranteed.